



The Gene Tab

Gene: IL2 (ENSG00000109471)

Name	Transcript ID	Length (bp)	Protein ID	Length (aa)	Biotype	CCDS
IL2-001	ENST00000226730	1029	ENSP00000226730	153	Protein coding	CCDS3726
IL2-002	ENST00000477645	586	No protein product	-	Retained intron	-

Gene summary help

Contigs: Ensembl/Havana, ...

• Tabs allow navigation through location, **gene**, transcript, variation, and gene regulation information

• The **transcript table** lists splice variants and has **sortable columns**

• Find information for a **gene**

• **Comparative and variation** displays are available

• **Export** sequence

Page-specific **help** is available

• **Gold** transcripts are agreed on by both Ensembl and VEGA/Havana

• **Red** transcripts are protein coding and are from Ensembl or VEGA/Havana

• **Blue, Grey, or Pink** transcripts are non-coding

• **Human transcripts** make the **Gencode** set

The Transcript Tab: Exons View

Colour key for **variations**

No.	Exon / Intron	Start	End	Start Phase	End Phase	Length	Sequence
1	5' upstream sequence	123,377,449	123,377,880	-	0	432	CTATCACCCTAGTGGGCTAATGTAACAAGAGGGATTTCGTCCTTTGGGGTTTAAAGAAATCCAAAGAGCATCAGAAGTTTTCACAGTGGTAAAGCTTTGAAATATGTGTAATATCCATATATTTCCAGATACAGTATAAATGCATCTCCACTCTTTAATCACTACTACAGTAAGCTCAACCTCCGCGCCCTGCTGCTGCATGCACTAAGCTTTCACCTGTGCACAAATCTAAGAAAACACAGCTCAACTGGAGATTTCACCTAATGAATTAATgtaagtattttcttctacta.....atgcaaaAATTACAAGAATCCAAACTCACCAGGATGTCACATTTAAgtaagacaattttatgtgat.....gagctgGCCACAGAACGAAACATCTTCAGTGTCTAGAAGAAGAACTCTAAATTTAGCTCAAAGCAAACCTTCACTTAAGACCCACGTAATAGTCTCGAACTAAAG
2	Intron 1-2	123,377,359	123,377,448	0	0	90	
2	ENSE00000935280	123,377,299	123,377,358	0	0	60	
2	Intron 2-3	123,375,009	123,377,298	0	0	2,290	
3	ENSE00002516766	123,374,865	123,375,008	0	0	144	

UTR

Coding sequence

Intron

Upstream sequence

• **Sequences**

• **Protein domains**

• **Download** to open in **MS Word**

• Click a **variation** for population frequencies, phenotypes, and risk alleles

Upstream sequence

Coding sequence

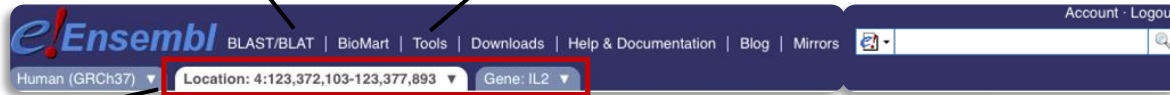
Intron



- Links to **BLAST/BLAT**, **BioMart** & our **Perl API**

Try our **tools**:

- Assembly & ID History Converter**
- Variant Effect Predictor**



- Search** for gene, location, variation, clone, probeset, or phenotype

Tab browsing

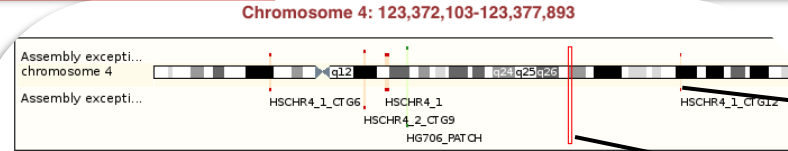
View whole genome alignments

Customise view with **Configure this page**

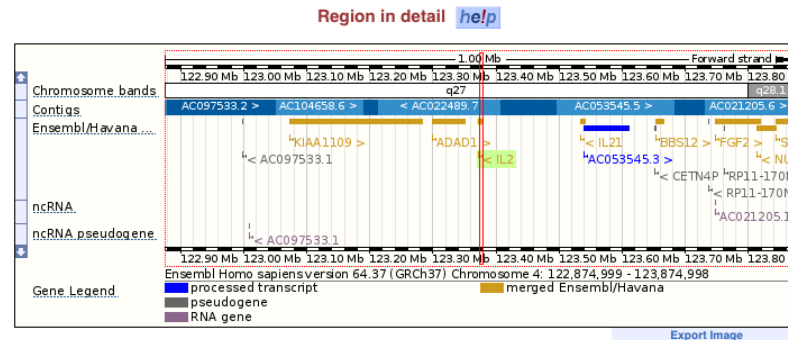
Upload your data with **Manage your data**

Conserved sequence from analysis of multi-species alignments

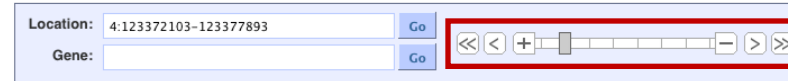
Browse **more organisms** at www.ensemblgenomes.org



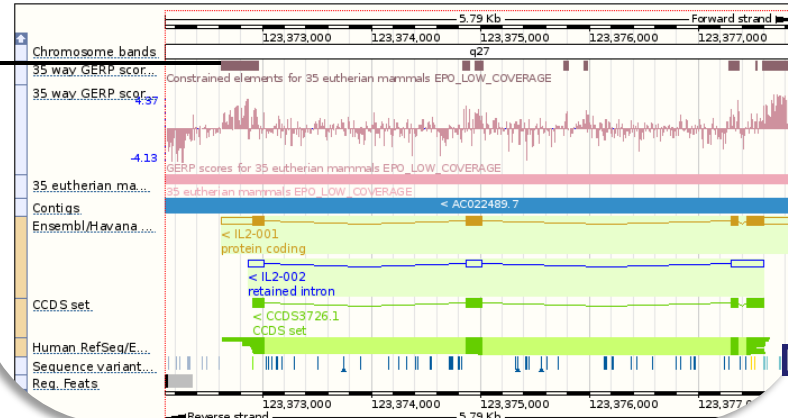
- Alternate **haplotypes** are available
- Current **location** is indicated



Browse genes & annotation for **over 55 species** in our chordate site



- Zoom** and scroll a region



- Click a colour-coded **sequence variant** for a pop-up box of information

Variation: rs3087209

[rs3087209 properties](#)

bp	4:123377483
Status	cluster, precious
Class	SNP
Ambiguity code	M
Mapweight	1
Alleles	A/C
Source	dbSNP, Illumina_Human1M-duov3
Type	NON_SYNONYMOUS_CODING